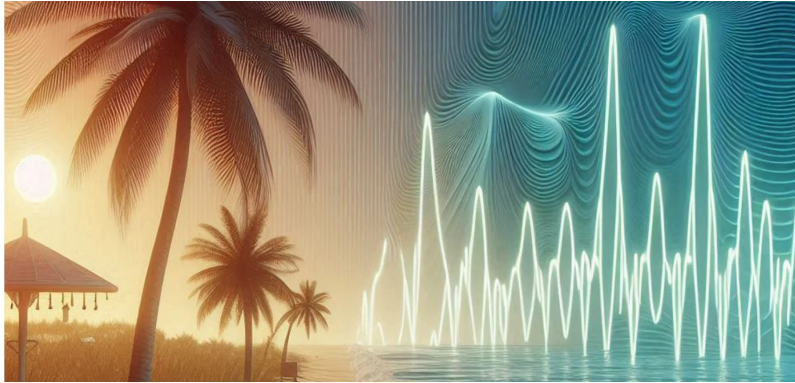


The Biofeedback Society of Florida in conjunction
with the Association for Applied Psychophysiology and Biofeedback
presents

A crash course in EEG and QEEG: All the things I wish I'd known in the beginning



A comprehensive and clinician-friendly introduction to EEG and Quantitative EEG (QEEG) — covering the practical foundations, interpretive frameworks, and clinical profiling skills that experienced practitioners wish they'd had from the start.

Presented by

**Tiff Thompson, Ph.D., R.EEG.T.,
QEEG-DL, BCN, LMFT**

CEO, NeuroField Neurotherapy, Inc. &
The School of Neurotherapy, Inc.
Santa Barbara, California

July 18 - 19, 2026

The Florida Hotel & Conference Center
Orlando, Florida

This intermediate level workshop offers **12 CE credits** and is intended for psychologists, mental health clinicians, and healthcare professionals who practice or are interested in biofeedback, neurofeedback, or neurotherapy. The course is designed to be accessible to those new to EEG/QEEG while providing substantive depth for practitioners with existing experience. **REMOTE ATTENDANCE WITH CE CREDIT AVAILABLE:** Register online at www.floridabiofeedback.org and check the 'Remote' option.

Program Schedule

Saturday, July 18, 2026

- 7:30 - 8:00 Onsite and remote sign-in, coffee/tea, announcements
- 8:00 - 8:30 **Tiff Thompson, PhD, R.EEG.T., QEEG-DL**
Introductions - attendees, instructor, and the day's road map. Participants share their backgrounds and learning goals, and expectations are set for the two-day course arc.
- 8:30 - 9:30 **Gathering EEG: Recording and Processing**
A practical walkthrough of electrode placement, cap application, impedance checking, data acquisition protocols--the basics of signal processing and the fundamental steps before meaningful interpretation can begin.
- 9:30 - 10:30 **EEG for Beginners & QEEG 101**
An accessible introduction to reading raw EEG waveforms, understanding what quantitative EEG adds to the clinical picture. Covers the major frequency bands, power spectral analysis, absolute vs. relative power, and the significant role of QEEG normative data bases.
- 10:30 - 10:45 Break
- 10:45 - 12:00 **History of EEG and QEEG**
Hans Berger's first recordings in the 1920s, the development of computerized QEEG, normative databases, modern brain mapping. Understanding the origins of the field, its controversies and milestones — critical context for evaluating clinical tools and interpreting research.
- 12:00 - 1:00 Lunch on your own in the Florida Hotel or in the attached Florida Mall
- 1:00 - 2:00 **Artifacts**
The art of distinguishing brain signal from noise. Participants will learn to identify and manage the most common EEG contaminants — muscle artifact, movement, electrode pop, eye blinks, cardiac interference, sweat, and line noise — and understand how undetected artifacts corrupt clinical interpretation and protocol selection.

(Program continued next page)

- 2:00 - 3:00 **Montages and Morphology**
Referential, linked, common average, and Laplacian montages--how montage choice shapes what you see. Morphological features of the EEG--waveform shape, amplitude, frequency, topographic distribution, and reactivity--normal and clinical presentations
- 3:00-3:15 Break
- 3:15-4:15 **Normal Adult and Pediatric Data**
The healthy brain across the lifespan: developmental EEG norms from childhood through late adulthood--the reference library needed to recognize typical limits--how development, aging shape amplitude, frequency, coherence
- 4:15-5:15 **Vigilance and Sleep**
Arousal state as a modulator of the EEG — understanding its important role. The EEG continuum: hypervigilance through drowsiness, sleep stages; how state misidentification leads to misinterpretation, how vigilance-informed protocol selection improves outcomes.

Program Schedule

Sunday, July 19, 2026

8:00-12:30 **Disordered Profiling - Audience's Choice**

Day 2 is a focused half-day (**15 min. break**) dedicated entirely to clinical application and disordered brain profiling, drawing on the foundational knowledge built on Day 1. Participants select the clinical presentations they most need to understand. Each condition is systematically unpacked through its characteristic EEG and QEEG signatures, supported by real case examples that translate neurophysiological profiles into clinical reasoning and treatment planning. Topics available for audience selection: Anxiety · ADHD · Learning Disabilities · Autism Spectrum Disorder (ASD) · PTSD · OCD · Depression · Panic / Aggression / Rage · Head Injury & Concussion · Chronic Pain · Dementia & Age-Related Cognitive Decline.

Course Description

This two-day intensive workshop offers a comprehensive and clinician-friendly introduction to EEG and Quantitative EEG (QEEG) — covering the practical foundations, interpretive frameworks, and clinical profiling skills that experienced practitioners wish they'd had from the start. Designed to be accessible to those new to QEEG while enriching for practitioners with existing experience, this course builds from hands-on EEG basics through disordered neurophysiological profiling, giving attendees immediately applicable clinical knowledge.

Workshop Faculty

Tiff Thompson, PhD, MFT, QEEG-D, R.EEG T, BCN, is a clinical neuroscientist, Licensed Marriage and Family Therapist (LMFT 89425), educator, and technologist. She is the CEO of NeuroField Neuro-



therapy, Inc. and the School of Neurotherapy, Inc. based in Santa Barbara, California. BCIA Board Certified in Neurotherapy (BCN), Licensed Diplomate in Quantitative Electroencephalography (QEEG-DL), and a Registered EEG Technician (R.EEG.T.), her work bridges clinical practice, education, and emerging technology. Dr. Thompson has trained clinicians worldwide in QEEG analysis, neurofeedback, and Neurostimulation, with a particular focus on translating advances in computational neuroscience into accessible tools

for working clinicians. She is a regular presenter at the Association for Applied Psychophysiology and Biofeedback (AAPB), the International Society for Neuroregulation and Research (ISNR), and regional biofeedback societies, where she teaches QEEG fundamentals, brain-mapping interpretation, and disorder-specific clinical reasoning.

Course Learning Objectives

- Describe the history and scientific foundations of EEG and quantitative EEG (QEEG)
- Demonstrate correct EEG acquisition procedures including electrode placement and impedance standards
- Identify normal EEG morphology and developmental norms across the lifespan
- Recognize and differentiate common EEG artifacts
- Interpret EEG frequency band activity
- Apply montage selection to clinical interpretation
- Distinguish arousal and vigilance-related EEG changes and apply them to clinical interpretation

PROGRAM CONTENT LEVEL: Intermediate - content builds upon the learner's foundational knowledge, familiarity with the literature and/or experience in a content area. Programming at this level includes more depth than at a beginning level program. It could also serve as a refresher course for individuals who have a background in a content area and are interested in learning more contemporary applications. **COURSE UTILITY AND**

VALIDITY: Interventions discussed in this workshop are empirically supported (see references). Only minimal risks exist for EEG and QEEG methods, which will be addressed during the talk.

Registration Form

Tiff Thompson, Ph.D. | A crash course in EEG and QEEG

July 18 - 19, 2026 | The Florida Hotel & Conference Center

To register online, go to www.FloridaBiofeedback.org

NAME: _____

ADDRESS: _____

CITY: _____ STATE: _____ ZIP: _____

CONTACT TELEPHONE: _____

EMAIL ADDRESS: _____

LICENSE NO: _____ BSF MEMBER: _____ AAPB MEMBER: _____

WORKSHOP TUITION - 12 CE credits | REGISTER ONLINE TO ATTEND REMOTELY

Registration includes a complementary 1-year BSF membership!



Registration by 7/3/26	\$369.
Registration after 7/3/26.....	\$399.
Students (degree-seeking, ID) by 7/3.....	\$199.
Students after 7/3/26.....	\$219.

Continuing education statement: Psychologists: The Association for Applied Psychophysiology and Biofeedback (AAPB) is approved by the American Psychological Association to sponsor continuing education for psychologists. AAPB maintains responsibility for the program and its content. There is no known commercial support for this program.

Cancellation Policy: Cancellations received by the BSF office by July 10, 2026 will be refunded minus a \$25 processing fee. No refunds will be granted after July 10, 2026. Cancellations must be made in writing and emailed to info@floridabiofeedback.org.

Credit Card Number (VISA or MC): _____

Expiration Date: _____ **Amount authorized: \$** _____

CVV2 number (3 digit security number on back of card): _____

Cardholder signature: _____
(I authorize BSF to charge the amount specified above to my credit card account)

Credit card billing address: _____
(if different from above)

Or Mail check payable to: The Biofeedback Society of Florida, Inc., c/o Aubrey Ewing, Ph.D., 605 Kingsmarsh Way, St. Simons Island, GA 31522 • (561) 742-7122

Meeting location and lodging: The workshop will be held at The Florida Hotel & Conference Center, 1500 Sand Lake Rd., Orlando, FL 32809. The hotel is offering workshop participants who reserve by 6/24/26 a discounted room rate of \$139/night plus tax and other fees (Group: **Biofeedback Society of Fla**). Reserve by phone/online: **800-588-4656** or direct link at www.floridabiofeedback.org.

Accessibility and non-discrimination policy: BSF is committed to accessibility and non-discrimination in its continuing education activities and to conducting them in conformity with the American Psychological Association's Ethical Principles for Psychologists. Participants are asked to be sensitive to privacy and confidentiality needs throughout the program and are encouraged to express any feelings of discomfort related to program content during discussion periods. BSF will attempt to accommodate participants' special needs and asks that such needs, questions, or concerns be addressed to the onsite program coordinator.

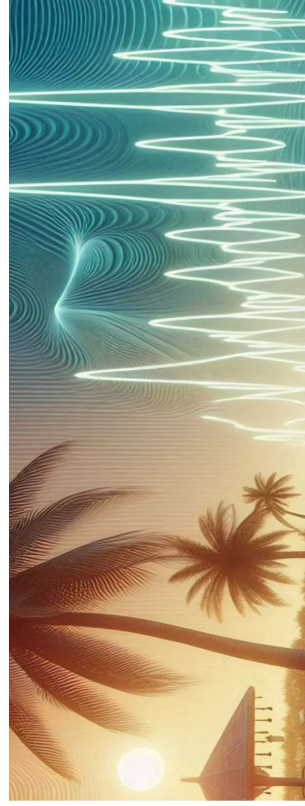
ADA accommodations will be made in accordance with the law. If you require ADA accommodations, please indicate what your needs are at the time of registration. The availability of appropriate accommodations cannot be assured without prior notification. For more information about this program, contact BSF via email at info@FloridaBiofeedback.org or by phone at 561-742-7122.

Financial interest declaration: Dr. Thompson is CEO of the companies, NeuroField Neurotherapy Inc. & The School of Neurotherapy Inc. This workshop will be free of any commercial bias.

For those psychologists using the modalities discussed in this workshop who are interested in the efficacy, science and latest clinical applications (1) this program presents research relevant to psychological practice, education and science; (2) it is our intention to host an offering to help psychologists keep up with the most current scientific evidence regarding assessment, intervention, and education; and (3) we believe that this program would allow psychologists to increase competencies in order to improve services to patients. This conference is *in no way* a substitute for the basic academic education and training needed for entry to the field of psychology.

The Biofeedback Society of Florida, Inc.
c/o 605 Kingsmarsh Way
St. Simons Island, GA 31522

**Crash Course in EEG and QEEG:
All the Things I Wish I'd Known in the Beginning**



July 18 - 19, 2026
The Florida Hotel & Conference Center
Orlando, Florida
12 CE credits

Presented by
Tiff Thompson, PhD, R.EEG.T., QEEG-DL, BCN, LMFT
CEO, NeuroField Neurotherapy, Inc. &
The School of Neurotherapy, Inc.
Santa Barbara, California